



Southbank
Institute of Technology
Education for aspiring minds

Training for Indigenous People

Program Guide 2012



Queensland Government

indigenous
entre



Contents

Why you should study with us.....	04
Why choose to study Indigenous courses with Southbank Institute?.....	05
Business	06
Justice	06
Community	08
Education	10
Visual arts	12
Pathways to university	14
Need more information?	14
VET-FEE HELP.....	14
Enrol in four easy steps.....	15

Key

- Q** **QTAC**
Apply directly to Queensland Tertiary Admissions Centre (QTAC).
Note: QTAC codes in this guide are current for 2011.
- DE** **Direct Entry**
Apply directly to Southbank Institute of Technology.
- WB** **Workplace Based**
This course is delivered in your place of work.
- OL** **Online**
The course is offered online.
- FD** **Flexible Delivery**
A course delivered through a range of methods.
- FT** **Full-time**
The course is offered on a full-time basis.
- PT** **Part-time**
The course is offered on a part-time basis.
- AT** **Aboriginal and Torres Strait Islander (A&TSI)**
Apply directly to the School of Indigenous Australian People,
Southbank Institute of Technology.

Information and courses contained within this booklet are correct as at June 2011 and are subject to change at any time without notice. For up to date information call 13 72 48 or visit southbank.edu.au

Why you should study with us.

Here's why more than 28,000 students from over 90 countries chose to study with us in 2010.

1 We will help shape your career

- we provide quality education for a range of careers
- our courses give you the practical skills so you are job ready
- we offer 140 formal pathways to university
- 88.2% of graduates go on to further study or get a job after*.

2 We are a leading training provider with highly skilled teachers

- our respected industry focused teachers strive to deliver you the best teaching
- we work with industry to deliver up-to-date training packages endorsed by the Australian Quality Training Framework.

3 We offer a world-class learning environment

- we recently completed a major redevelopment of our Southbank campus to create a world-class facility designed to inspire interactive and student-focused teaching and learning
- our campus offers open and flexible learning spaces so you can work at your own pace and be your best
- study modes available including full-time, part-time, short courses, online, flexible delivery and on-the-job training.

4 We are centrally located

- our Southbank Campus is located in the heart of Brisbane's cultural precinct and right next to the city centre. It is easily accessible to buses, trains and the City Cat
- newly opened student accommodation is available next door to our main campus.

5 We provide an international perspective

- we currently have 3,500 international students studying with us from more than 90 countries
- we can provide international students an excellent pathway into university or further training
- international students can access a first class support network, including a dedicated International Student Support team, an International Student Social Club and English Language Intensive Courses for Overseas Students (ELICOS)
- we can point you in the right direction to help you find accommodation.

6 We will support you

We offer a wide range of services to help you when you need it most, including:

- scholarships and bursaries
- career counselling
- AccessAbility services
- library
- literacy and Learning Centre
- Indigenous Australian student support
- student employment opportunities
- a 24 hour security team.

7 We offer a wide variety of courses of highly sought after disciplines

Choose from a range of courses in the following areas:

- Health Services
- Biotechnology
- Engineering
- Multimedia
- Hospitality and tourism
- Creative industries
- Business services.

Where to from here?

Visit our website southbank.edu.au for information on courses available and study options or contact us on 13 72 48.



Check us out on **facebook**/SBITBrisbane



Follow us on **Twitter** @SBITBrisbane

*Source: National Centre for Vocational Education Research (NCVER), 2009 Summary of Graduate Outcomes.



"Enrolling (in the Certificate III in Business) was a turning point in my life and completing it gave me the confidence and knowledge to achieve my goals."

*Cynthia Maklin, Graduate of Certificate III in Business
Regional winner, Vocational Student of the Year, 2009.*



"The teachers understand the cultural sensitivity of providing training and educational opportunities to Indigenous Australians. Our traditions are fully understood."

Llewellyn Williams

Why choose to study Indigenous or Torres Strait Islander courses with Southbank Institute?

For more than 20 years Southbank Institute has offered courses to address the training needs of Aboriginal and Torres Strait Islander people through the School of Indigenous Australian People (SIAP).

With a recently completed multi-million dollar development program, Southbank Institute has some of the most up-to-date facilities in Queensland.

Training is focused on helping students develop work relevant skills with courses delivered by industry professionals. You will be learning in a culturally supportive environment to ensure you make the most of your studies and help open the door to greater employment opportunities.

The School offers courses in business, justice, community services, education, visual arts, training and assessment.

Indigenous Australian student support

The faculty and staff are committed to addressing the learning needs of Aboriginal and Torres Strait Islanders.

We can assist you with:

- accommodation and advice on welfare and other support issues, including course selection, career options, employment opportunities and Abstudy financial assistance
- enrolment processes
- liaison with government departments
- strategies for researching and preparing assignments
- personal and family concerns.

Location Indigenous Centre, C Block (level 1)



Business



Justice

Diploma of Justice Aboriginal and Torres Strait Islander (A&TSI)

Q AT FT

Course No	Duration	Entry criteria
39252QLD-1 QTAC codes 155456 155450	1 year (full-time)	For entry into the course, applicants need to be of Aboriginal or Torres Strait Islander descent (as defined in Abstudy guidelines).

You can enrol in the above Diploma or one of the pathway courses below. Successful completion guarantees direct entry, with study credits, into the university degree.

Course No	Pathways to university (guaranteed entry)
QTAC codes 155496 155490	Diploma of Justice (A&TSI) / Bachelor of Justice (QUT)

Career opportunities Graduates of this Diploma will be eligible to work, with minimal supervision, in justice and related public sector departments in the following areas: corrective and community services, Department of Emergency Services, customs and immigration control or police.

Description Put your legal career into safe hands with extensive preparation for employment in the area of State and Federal law enforcement. This course has been developed to provide you with a sound understanding of criminal and civil justice systems and the techniques and skills to provide guidance and counselling to others. You will gain job ready skills, knowledge and experience for employment in a diverse range of positions in corrective and community services, customs and immigration control.

The course has been tailored to ensure you gain job-ready skills, as well knowledge integral to successful articulation into the higher education sector.

Some of the key areas of study include how to:

- analyse criminal and civil justice systems
- provide assistance to A&TSI people accessing the justice system
- support A&TSI people in the justice system
- protect the safety and welfare of A&TSI offenders
- manage successful cultural practice for justice workers
- apply the Queensland Criminal Code
- manage ethical and accountability responsibilities and responsibilities in the justice system
- prepare information for justice processes and facilitate court orders.

Further study options Southbank Institute has built links with many universities including QUT and Griffith to give you more options for further study. This means you can benefit from direct entry into university and get a dual qualification in almost the same time it takes to gain a degree. Your studies will combine practical skills and theoretical knowledge that will hold great appeal to potential employers.

Certificate III in Business

AT FT

Course No.	Duration	Entry criteria
BSB30107	6 months (full-time)	For entry into the course, preference is given to prospective learners of Aboriginal or Torres Strait Islander descent (as defined in Abstudy guidelines) who meet the basic entry criteria as determined by our short selection test. Other students are selected according to eligibility and merit, vocational experience, previous study and personal competencies.

Career opportunities Graduates learn the skills for employment as a receptionist, secretary, personal assistant, word processing operator, computer operator, administrative assistant, clerical officer.

Description Take the next step in your business career with a course designed to provide advanced training for office-related roles. You will learn the practical skills necessary for employment in office and administrative fields. This course is designed for a variety of learners including young people looking for basic business knowledge through to mature persons looking to refresh their knowledge of modern office techniques to help you re-enter the workforce.

Some of the key areas of learning in this course include:

- creating and using databases
- creating electronic presentations
- advanced communication strategies
- working effectively with diversity
- writing simple documents
- organising workplace information.

Further study options Diploma of Business (including the nested Certificate IV in Business) Diploma of Management, Diploma of Business Studies. These diploma courses have a variety of articulation arrangements to university degree courses.



Community

Diploma of Family Intake and Support Work

AT FT

Course No.	Duration	Entry criteria
CHC51808 QTAC codes 155414 155416	1 year (full-time)	For entry into this course, applicants will be of Aboriginal or Torres Strait Islander descent (as defined in Abstudy guidelines) and have completed Year 12 or equivalent. Non school-leavers are selected according to eligibility and merit, vocational experience, previous study and personal competencies as determined by our short selection test and suitability for employment in the area of welfare and community development.

Career opportunities Assessor, case co-ordinator, case manager, client service assessor, co-ordinator, family services co-ordinator, welfare worker, social welfare worker, early intervention co-ordinator, local area co-ordinator, local support co-ordinator, program manager, program/service co-ordinator, community worker.

Description During this diploma course you will be prepared to assist Indigenous individuals, families and groups with social, emotional and financial difficulties. The course will provide you with the most advanced social services training for employment in Aboriginal and Torres Strait Islander communities. You will learn industry ready skills needed to enter a supervisory role in the promotion of health, mental, spiritual and cultural well being with a community development focus.

- work within a legal and ethical framework
- work effectively with culturally diverse clients and co-workers
- operate in a Family Law environment
- recognise and respond to domestic and family violence
- provide support services to clients
- utilise specialist communication skills to build strong relationships.

This is the perfect course to help you discover a real sense of belonging to your community.

Further study options Formal articulation arrangements will be negotiated for this course.



"The Diploma of Family Intake and Support Work has allowed me to go further than just study and actually understand what areas of knowledge are important and how they help you in the field."

Alex Garbutt recent graduate of Family Intake and Support Work



Certificate IV in Education (A&TSI)

AT PT

Course No.	Duration	Entry criteria
39240QLD	1-2 years (part-time)	For entry into the course, applicants need to be of Aboriginal or Torres Strait Islander descent (as defined in Abstudy guidelines) or parent of an Indigenous child or Non-Indigenous person who has a willingness to work with Indigenous students in the classroom. Entry is not restricted by formal educational requirements. Applicants will be interviewed to determine entry level, literacy and numeracy skills and disposition towards children.

Career opportunities Graduates of this course will be qualified to work as a general teacher's aide, community teacher, library administrative and/or technology assistant and cultural liaison officer.

Description Make an impact in the lives of school students by training for an educational role in Aboriginal and Torres Strait Islander communities. This course provides you with knowledge and practical skills needed to work in an educational service providing support to students and colleagues in line with industry and Aboriginal and Torres Strait Islander cultural protocols.

On completion of this course you will be able to work effectively in an educational environment providing assistance within early childhood, primary, secondary, library and information technology administration and community recreation environments. You will be able to provide tutor support for peers, students and parents and be equipped to act as a cultural liaison officer assisting in development of community and school partnerships.

Some of the key areas of learning in this course include:

- support the teaching of literacy and numeracy
- assist children to express themselves through creative arts
- develop and apply the knowledge of science
- monitor children's behaviour
- apply action research to planning and learning experiences for children
- develop work practices to accommodate cultural identity
- identify and respond to children and young people at risk .

Education

Certificate III in Education (A&TSI)

AT DE PT

Course No.	Duration	Entry criteria
39239QLD	1-2 years (part-time)	For entry into the course, applicants need to be of Aboriginal or Torres Strait Islander descent (as defined in Abstudy guidelines) or parent of an Indigenous child or Non-Indigenous person who has a willingness to work with Indigenous students in the classroom. Entry is not restricted by formal educational requirements. Applicants will be interviewed to determine entry level, literacy and numeracy skills and disposition towards children.

Career opportunities Teacher aide or assistant.

Description Help others to reach their potential by training to work in an educational role in Aboriginal and Torres Strait Islander communities. The Certificate III in Education will provide you with the knowledge and practical skills necessary to work as an employee in educational services. You will learn how to support students and colleagues in line with industry and Aboriginal and Torres Strait Islander cultural protocols.

On completion of the course you will be able to provide general teaching and learning assistance within early childhood, primary, secondary, library, information technology, administration and community recreation environments. You will also learn how to provide tutor support to peers, students and parents.

Some of the key areas of learning in this course include:

- developing workplace literacy and numeracy
- word processing and PowerPoint
- promoting partnerships between school and community
- how to support the development of children
- communicating with children in a learning environment
- providing experiences to support children's play and learning
- delivering services / activities to stimulate children's development and enhancing their leisure
- further developing your understanding of Aboriginal or Torres Strait Islander identity.

Further study options Certificate IV in Education (Aboriginal and Torres Strait Islander)

Certificate IV in Training and Assessment

DE PT

Course No.	Duration	Entry criteria
TAE40110	Day and evening classes are available: 10 weeks - 1 full day per week OR 15 evenings (5.30-9.00pm) + 1 Saturday (dates for Saturday to be negotiated in class)	There are no specific entry requirements, however it is anticipated that applicants will have access to a workplace in which to conduct training and assessment. Basic computer skills are required and some knowledge of PowerPoint would be advantageous. Students who have successfully completed the TAA40104 Certificate IV in Training and Assessment can apply for Credit Transfer towards the TAE40110 Certificate IV in Training and Assessment. The number of units available for Credit Transfer depends on the electives undertaken in the TAA40104.

Career Opportunities This course provides the minimum requirement for employment in training and assessment within a registered training provider or an enterprise trainer, assessor or training needs analyst.

Description Become The Certificate IV in Training & Assessment qualification has been developed to meet the current and future competency development needs of new and existing personnel working in a range of work functions and activities within vocational education and training including;

- enterprise trainer / assessor
- registered training organisation (RTO) trainer / assessor
- training advisor
- training needs analyst
- vocational education teacher

This course addresses a range of competency areas that represent key areas of work undertaken within organisations that provide training and assessment services. Three main domains are identified within the Certificate IV in Training and Assessment. They are:

1. Learning design – designing learning processes and learning products that enables the learner to learn.
2. Delivery and facilitation – managing, guiding, facilitating and monitoring the learning process and providing a meaningful learning experience
3. Assessment – measuring progress in learning and judging whether competence has been demonstrated

Further study options Successful completion of this program may assist students to gain entry into further study programs and/or may contribute towards study credits.



Visual arts

Certificate IV in Aboriginal and Torres Strait Islander Cultural Arts (The National Visual Arts, Crafts and Design Qualification)

AT DE FT

Course No.	Duration	Entry criteria
CUV40203	6 months (full-time)	For entry into the course, applicants will be of Aboriginal or Torres Strait Islander descent (as defined in Abstudy guidelines).

Career opportunities The Certificate IV in Aboriginal and Torres Strait Islander Cultural Arts will help prepare you for a diverse range of entry level occupations in the visual arts, craft and design industries including; Assistant in Community Arts Facility, Freelance Work or Artist at Artist Run Studio.

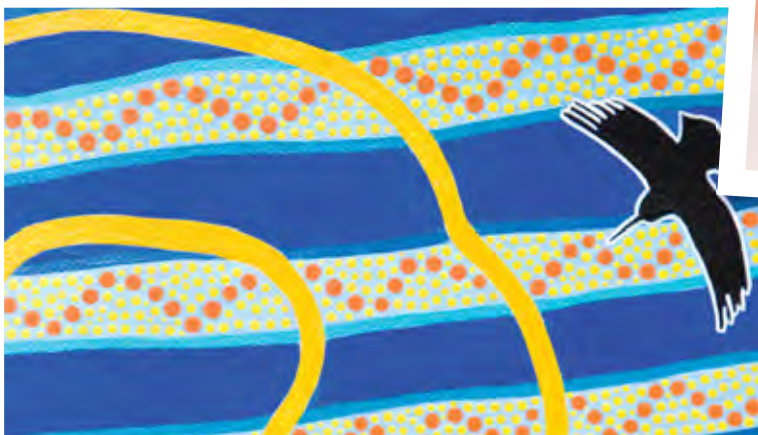
Description Studying the Certificate IV in A&TSI Cultural Arts will provide you with knowledge and understanding of Aboriginal painting techniques, drawing, design, ceramics and screen printing. As an Indigenous artist you will develop your skills across a variety of traditional and modern media. Plus, you will gain important business skills to help you work in a community arts organisation or as a self-employed artist.

The structure of the course allows you to develop your skills in a variety of specialisations and media. Specialisations covered in the course include:

- concept development
- applying drawing, painting and print techniques
- research and experiment with different drawing, painting and print techniques
- further your understanding of Cultural Identity
- develop and apply knowledge of Aboriginal and Torres Strait Islander (A&TSI) Arts Practice
- develop work to express your Identity
- select and prepare work for exhibition.

It's the perfect course to bring a colourful history to life.

Further study options Diploma of Visual Arts





Pathways to university

Southbank Institute of Technology is a recognised centre of excellence for its pathways to universities. We have partnered with major Queensland universities to give diploma, advanced diploma and associate degree graduates recognition for the quality of education and training they receive at Southbank Institute.

Many Southbank Institute diplomas and advanced diplomas articulate into degree courses with our partner universities. If you didn't get the right OP it's not the end of the world. By completing a diploma or advanced diploma at Southbank Institute, you can improve your OP score and heighten your chances of securing a place to university.

For more information about pathways visit southbank.edu.au or check out our Pathways to your Future brochure.

Need more information?

We have a range of brochures designed to help you to make the right decision and include:

- The Southbank Experience
- Parents Guide
- Support for Students
- Pathways to your Future
- Post-Degree Study

Our brochures are the perfect way to assist you with what Southbank Institute has to offer. Alternatively, if you would like to speak to us you can call 13 72 48.



Enrol in four easy steps

1. Select the course you want to study



2. Contact Student Administration

Phone 13 72 48 for the most recent up-to-the-minute information or go to our website southbank.edu.au



3. Apply to QTAC or Southbank Institute of Technology

Apply to QTAC (Queensland Tertiary Admissions Centre) or to Southbank Institute of Technology, depending on the course you choose (the courses listed in our careers booklets will let you know whether or not a QTAC application is required).



4. Secure your enrolment

Pay your fees before the course commences to secure your enrolment. Limited places are available in most courses.

For further information about how to enrol:
Visit southbank.edu.au/howtoenrol or call 13 72 48.



Don't forget to 'like' our Facebook page and follow what's happening on Twitter!

**Southbank Institute
of Technology**

66 Ernest Street
Locked Mail Bag 14
South Brisbane
Queensland
Australia 4101

13 72 48

enquiry@southbank.edu.au
southbank.edu.au

